

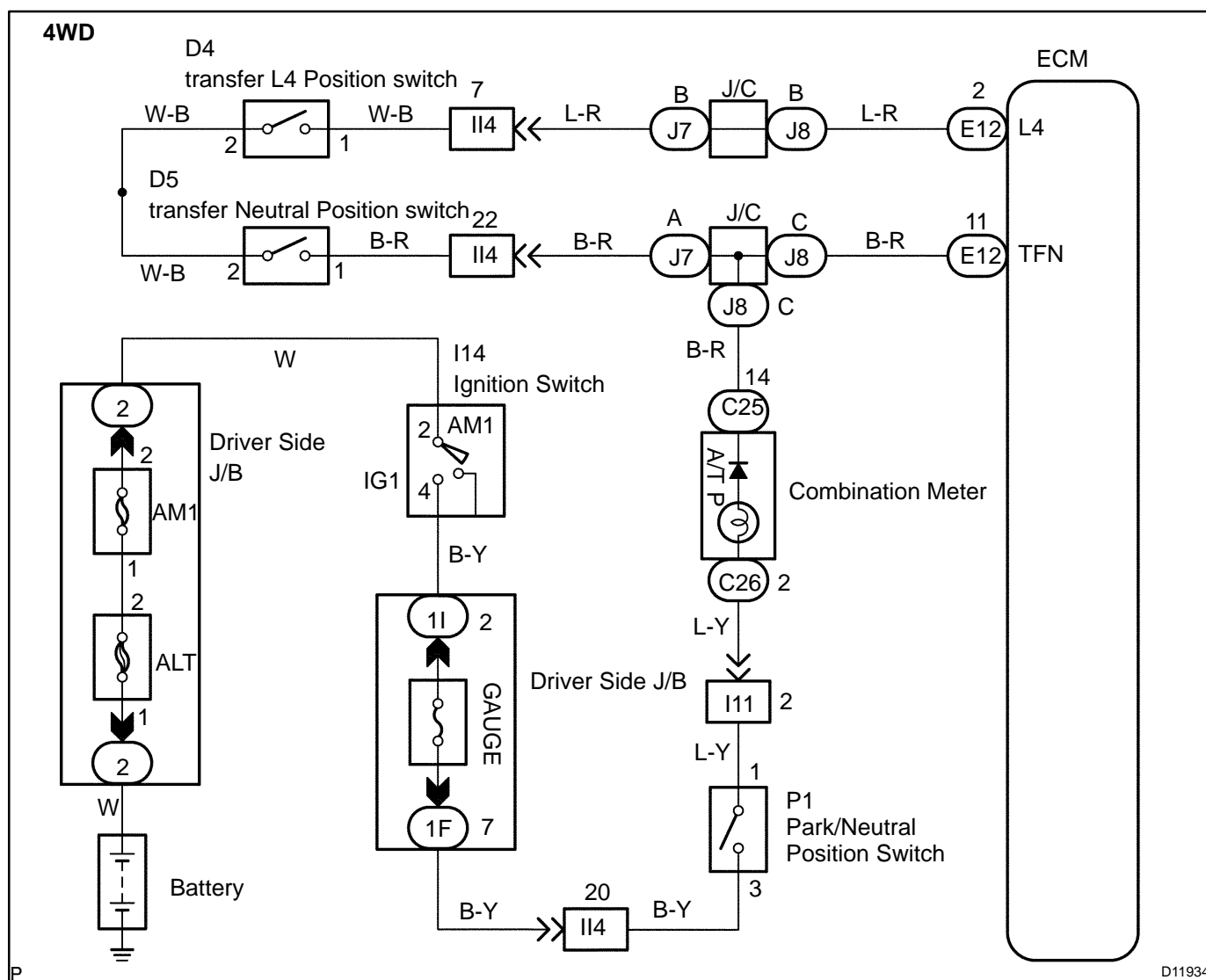
DTC	P1782	Transfer L4 SW Circuit Malfunction
------------	--------------	---

CIRCUIT DESCRIPTION

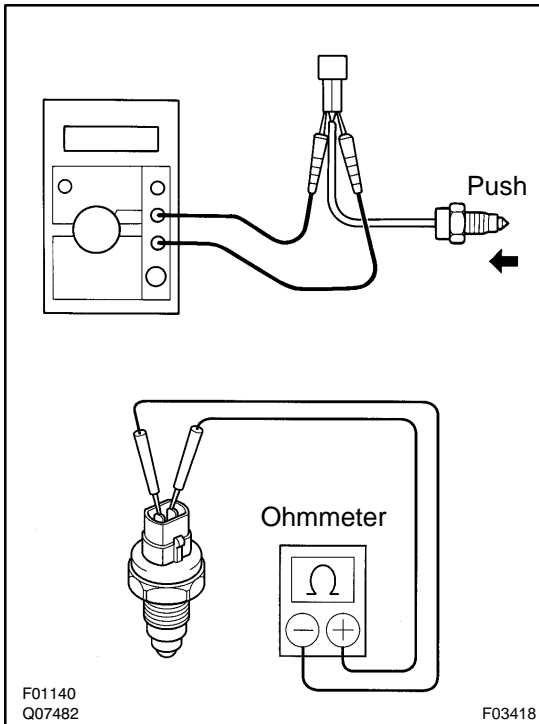
The ECM receive signal L4 from the indicator switch (LOW switch).

DTC No.	DTC Detecting Condition	Trouble Area
P1782	<p>When driving under conditions (a) and (b) for 1.8 seconds or more, the indicator switch (LOW switch) is ON . (1-trip detection logic)</p> <p>(a) Output shaft speed 3000 rpm or less (b) Transfer shift position is H</p>	<ul style="list-style-type: none"> • Short in transfer L4 position switch (LOW switch) signal circuit • transfer L4 position switch (LOW switch) • ECM

WIRING DIAGRAM



INSPECTION PROCEDURE

1 Check transfer L4 position switch (See page [TR-11](#)).**PREPARATION:**

Remove the transfer L4 position switch (See page [TR-9](#)).

CHECK:

Check that there is continuity between terminals, as shown.

OK:

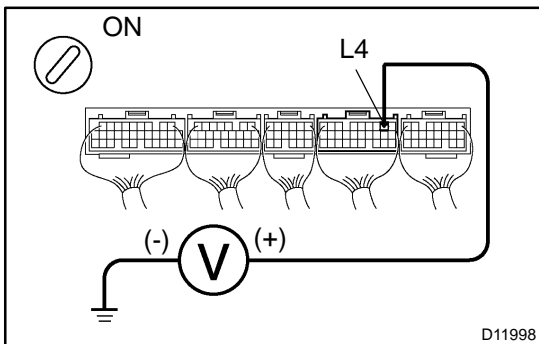
Switch position	Specified condition
Push	Continuity
Free	No continuity

NG

Replace transfer L4 position switch.

OK

2 Check voltage between terminal L4 of ECM and body ground.

**PREPARATION:**

Remove the ECM with connectors still connected.

CHECK:

- Turn the ignition switch ON.
- Measure voltage between terminal L4 of ECM and body ground when transfer in L4 position.

OK:

Transfer shift position	Voltage (V)
L	Below 1.5
Except L	9 - 14

OK

Proceed to next circuit inspection shown in problem symptoms chart (See page [DI-175](#)).

NG

3

Check for open or short circuit in harness and connector between transfer L4 position switch and ECM (See page [IN-28](#)).

NG

Repair or replace harness or connector.

OK

Check and replace ECM.